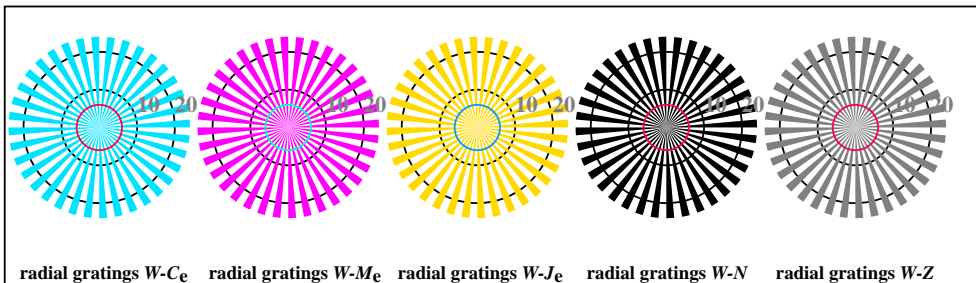


see similar files: <http://standards.iso.org/iso/9241/306/ed-2/AE27/AE27L0FA.TXT> /PS
technical information: <http://www.ps.bam.de/9241E> or <http://farbe.it.tu-berlin.de/AE.HTM>

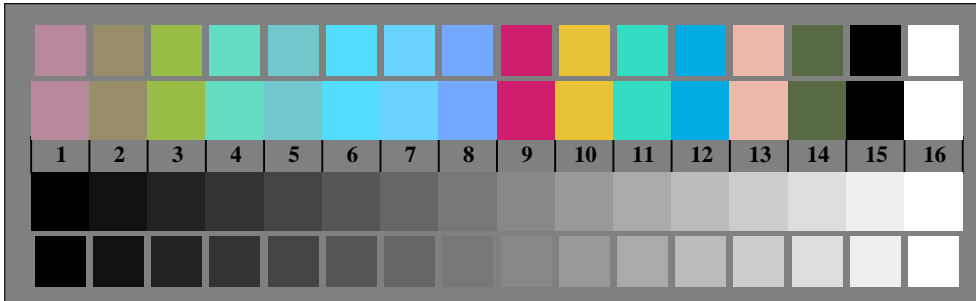
<http://standards.iso.org/iso/9241/306/ed-2/AE27/AE27F0P0.PDF> /PS; 3D-linearization, page 1/8
F: 3D-linearization AE27/AE27LF0P0.PDF /PS in file (F)



AE270-3, Picture B1Wde: Flower motif, 14 CIE-test colours and 2 + 16 grey steps (nf); PS operator: *settransfer*, 3 *colorimage*

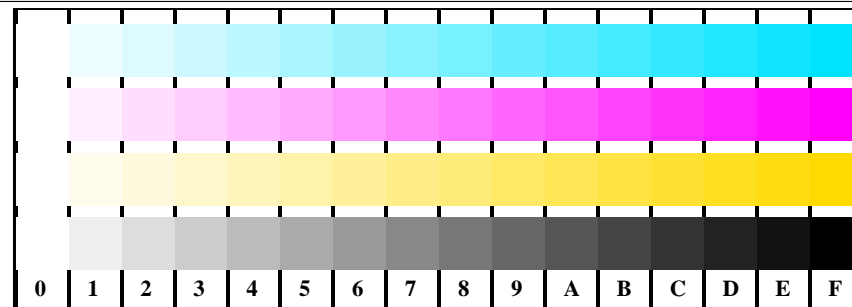


AE270-5, Picture B2Wde: radial gratings W-C_e; W-M_e; W-J_e; W-N; PS operator: *rgb->rgb_{de} setrgbcolor*

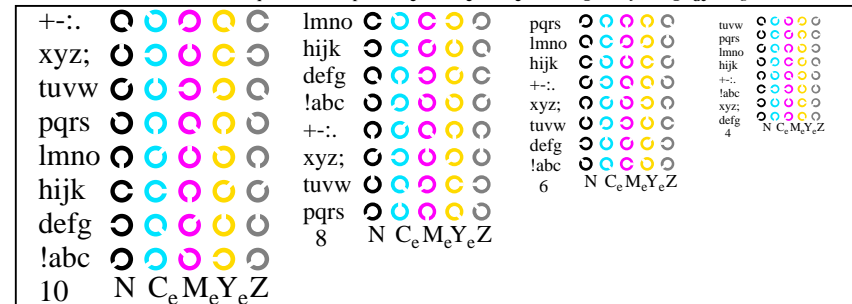


AE270-7, Picture B3Wde: 14 CIE-test colours and 2 + 16 grey steps (sf); *rgb/cmy0->rgb_{de} setrgbcolor*

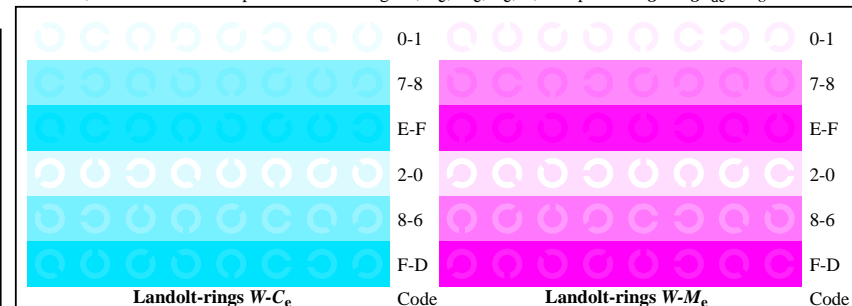
Test chart AE27 according to test chart 2 of ISO/IEC 15775
chromatic test chart CMYK



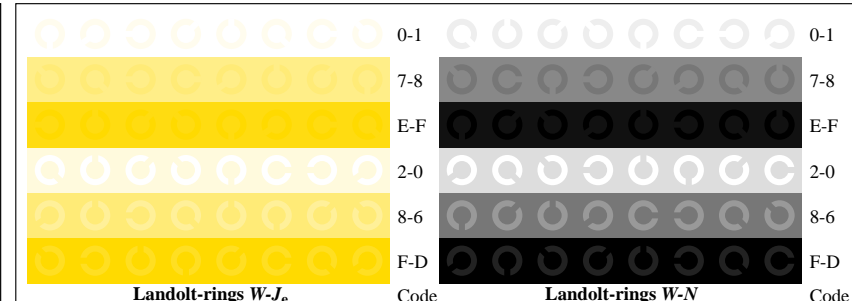
AE271-1, Picture B4Wde: 16 equidistant steps W-C_e; W-M_e; W-J_e; W-N; *rgb/cmy0->rgb_{de} setrgbcolor*



AE271-3, Picture B5Wde: Sript and Landolt-rings N; C_e; M_e; Y_e; Z; PS operator: *rgb->rgb_{de} setrgbcolor*



AE271-5, Picture B6Wde: Landolt-rings W-C_e; W-M_e; PS operator: *rgb->rgb_{de} setrgbcolor*



AE271-7, Picture B7Wde: Landolt-rings W-J_e; W-N; PS operator: *rgb->rgb_{de} setrgbcolor*

input: *rgb/cmy0/000n/w set...*
output: *->rgb_{de} setrgbcolor*

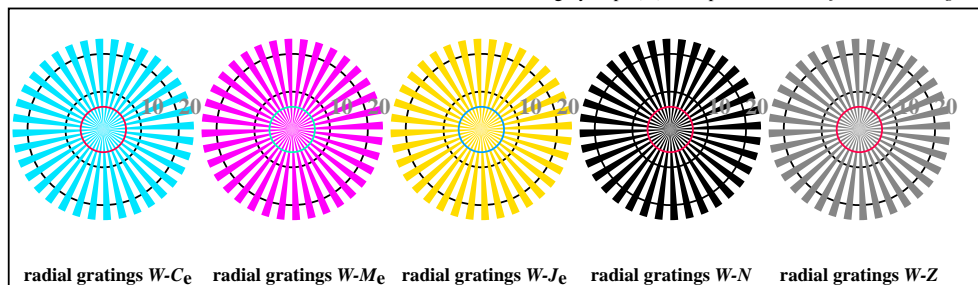
TUB Registration: 20170522-AE27/AE27L0FA.TXT /PS
application for measurement or viewing of display output

TUB material: code=th4ta

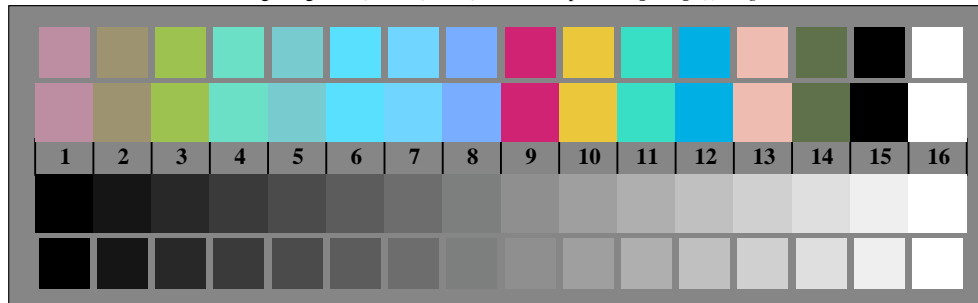
see similar files: <http://standards.iso.org/iso/9241/306/ed-2/AE27/AE27.HTM>
technical information: <http://www.ps.bam.de/9241E> or <http://farbe.it.tu-berlin.de/AE.HTM>



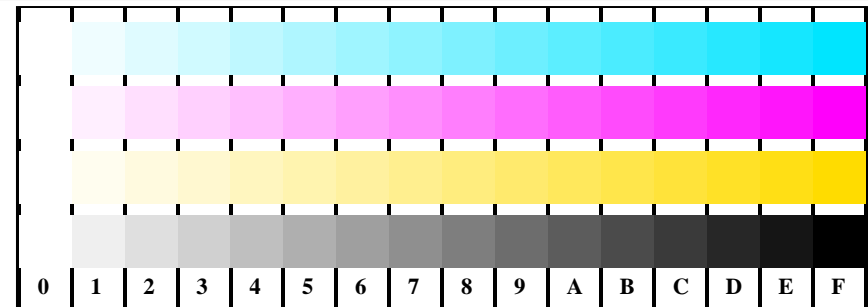
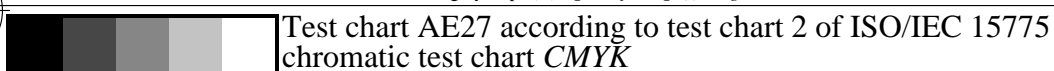
AE270-3, Picture B1Wde: Flower motif, 14 CIE-test colours and 2 + 16 grey steps (nf); PS operator: *settransfer*, 3 *colorimage*



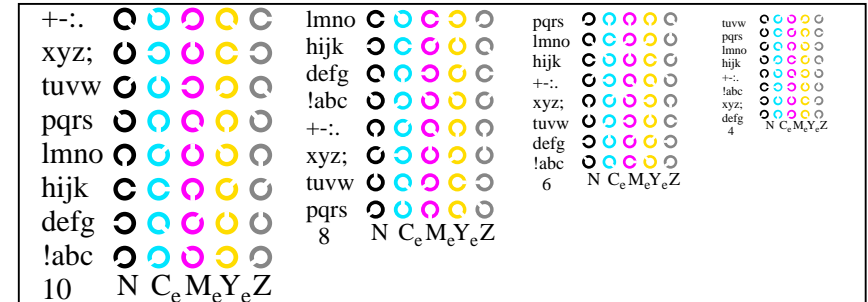
AE270-5, Picture B2Wde: radial gratings W-Ce; W-Me; W-Je; W-N; PS operator: *rgb->rgb_{de} setrgbcolor*



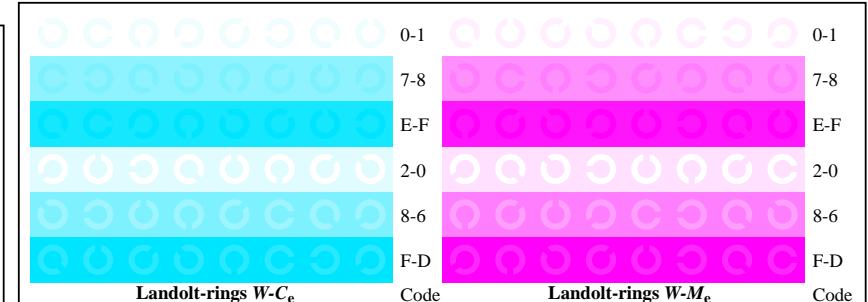
AE270-7, Picture B3Wde: 14 CIE-test colours and 2 + 16 grey steps (sf); *rgb/cmy0->rgb_{de} setrgbcolor*



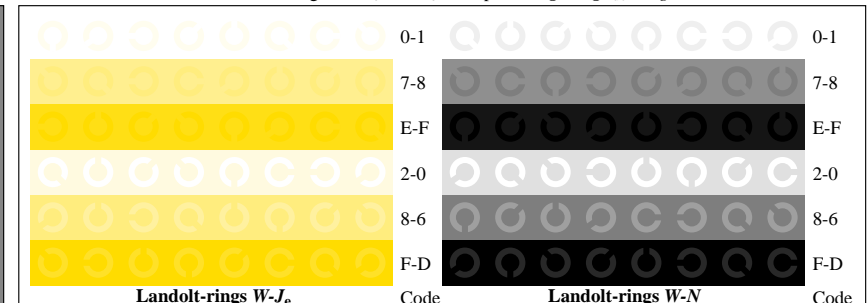
AE271-1, Picture B4Wde: 16 equidistant steps W-Ce; W-Me; W-Je; W-N; *rgb/cmy0->rgb_{de} setrgbcolor*



AE271-3, Picture B5Wde: Sript and Landolt-rings N; C_e; M_e; Y_e; Z; PS operator: *rgb->rgb_{de} setrgbcolor*



AE271-5, Picture B6Wde: Landolt-rings W-Ce; W-Me; PS operator: *rgb->rgb_{de} setrgbcolor*



AE271-7, Picture B7Wde: Landolt-rings W-Je; W-N; PS operator: *rgb->rgb_{de} setrgbcolor*

input: *rgb/cmy0/000n/w set...*
output: *->rgb_{de} setrgbcolor*

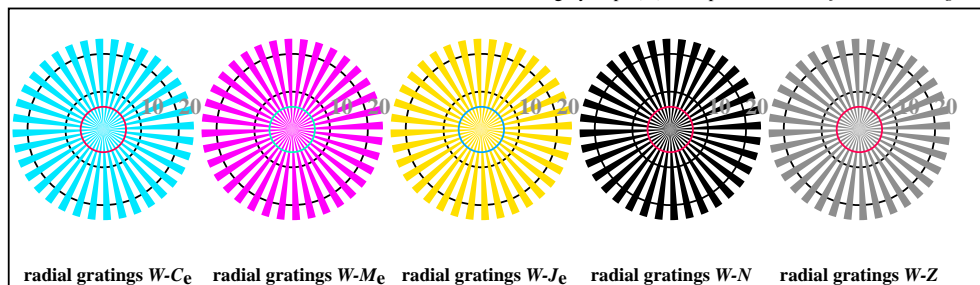
TUB Registration: 20170522-AE27/AE27L0FA.TXT /.PS
application for measurement or viewing of display output

TUB material: code=th4ta

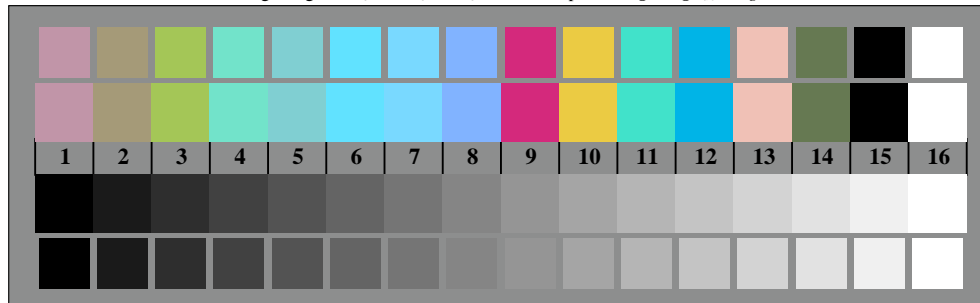
see similar files: <http://standards.iso.org/iso/9241/306/ed-2/AE27/AE27.HTM>
technical information: <http://www.ps.bam.de/9241E> or <http://farbe.it.tu-berlin.de/AE.HTM>



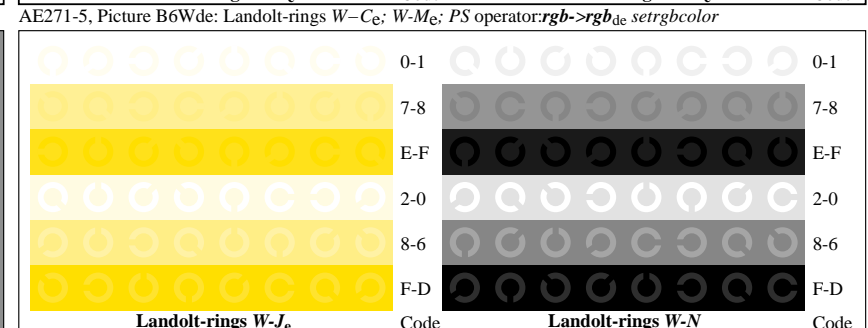
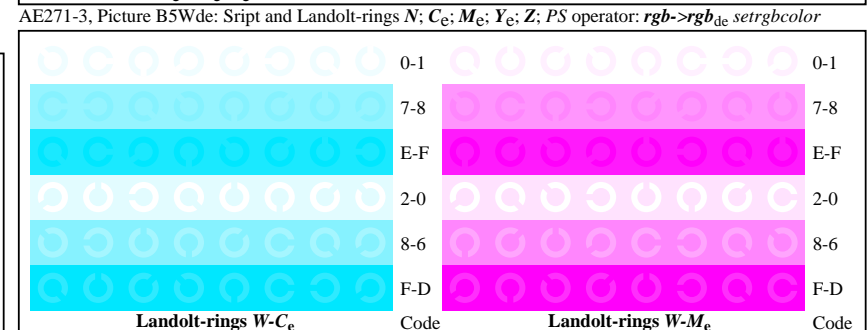
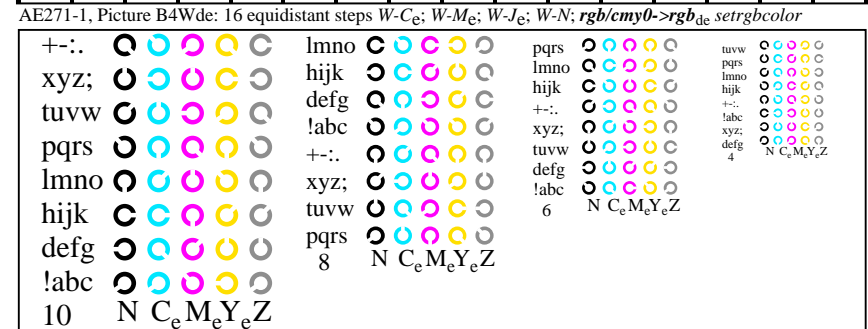
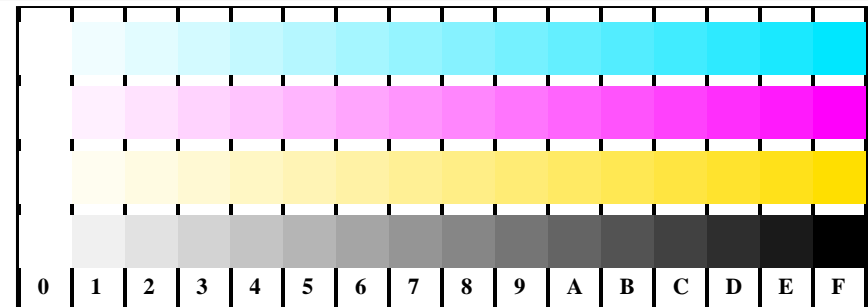
AE270-3, Picture B1Wde: Flower motif, 14 CIE-test colours and 2 + 16 grey steps (nf); PS operator: *settransfer*, 3 *colorimage*



AE270-5, Picture B2Wde: radial gratings W-C_e; W-M_e; W-J_e; W-N; PS operator: *rgb->rgb_{de} setrgbcolor*



AE270-7, Picture B3Wde: 14 CIE-test colours and 2 + 16 grey steps (sf); *rgb/cmy0->rgb_{de} setrgbcolor*



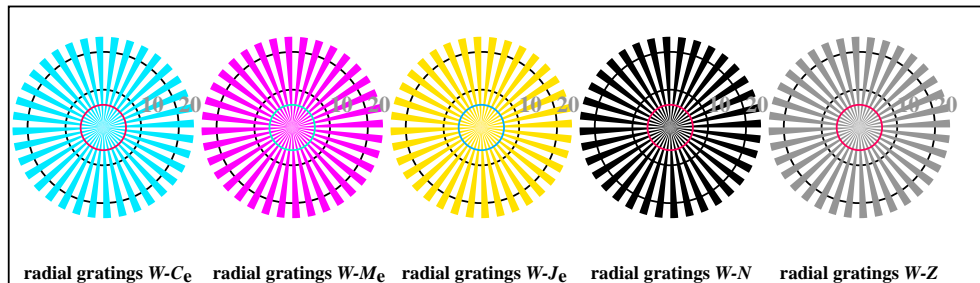
input: *rgb/cmy0/000n/w set...*
output: *->rgb_{de} setrgbcolor*

TUB Registration: 20170522-AE27/AE27L0FA.TXT /.PS
application for measurement or viewing of display output

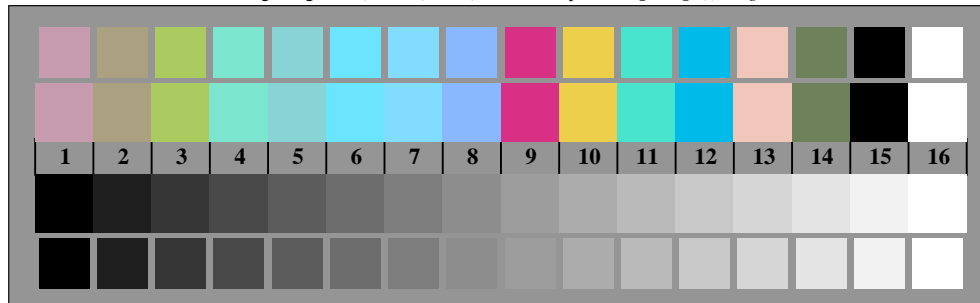
TUB material: code=th4ta



AE270-3, Picture B1Wde: Flower motif, 14 CIE-test colours and 2 + 16 grey steps (nf); PS operator: *settransfer*, 3 colorimage

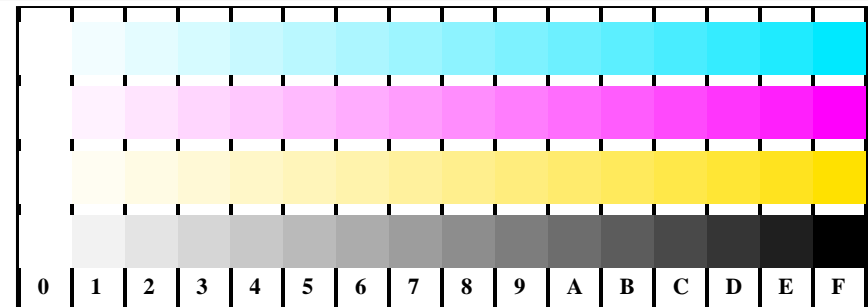


AE270-5, Picture B2Wde: radial gratings W-C_e; W-M_e; W-J_e; W-N; PS operator: *rgb->rgb_{de} setrgbcolor*

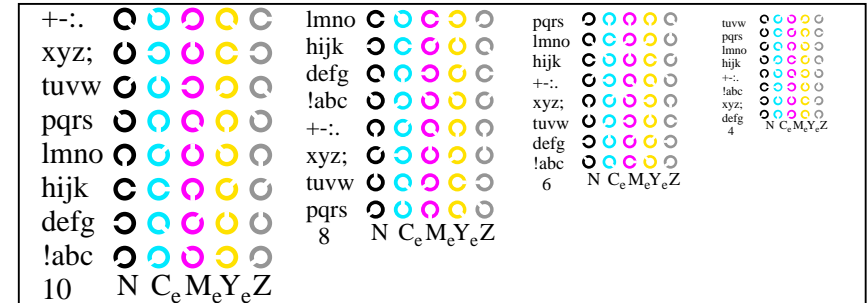


AE270-7, Picture B3Wde: 14 CIE-test colours and 2 + 16 grey steps (sf); *rgb/cmy0->rgb_{de} setrgbcolor*

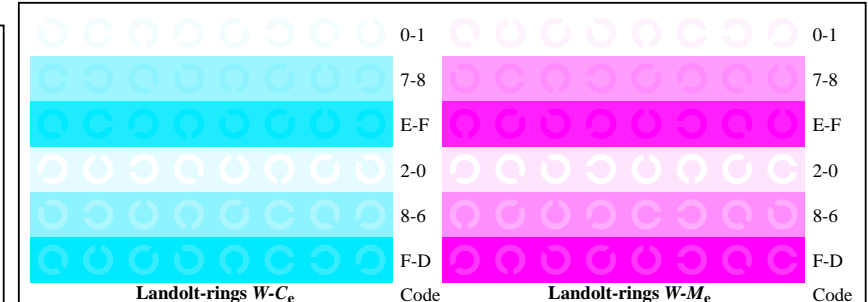
Test chart AE27 according to test chart 2 of ISO/IEC 15775
chromatic test chart CMYK



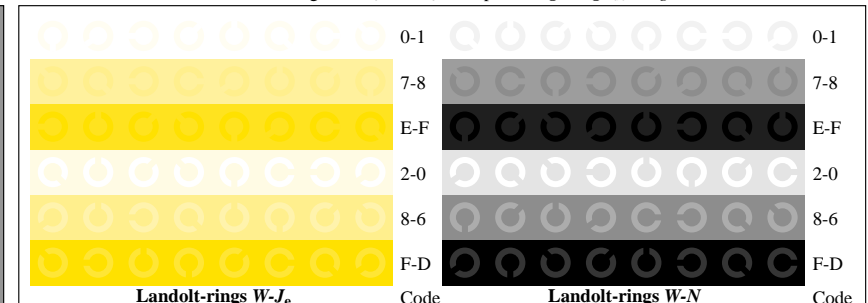
AE271-1, Picture B4Wde: 16 equidistant steps W-C_e; W-M_e; W-J_e; W-N; *rgb/cmy0->rgb_{de} setrgbcolor*



AE271-3, Picture B5Wde: Sript and Landolt-rings N; C_e; M_e; Y_e; Z; PS operator: *rgb->rgb_{de} setrgbcolor*



AE271-5, Picture B6Wde: Landolt-rings W-C_e; W-M_e; PS operator: *rgb->rgb_{de} setrgbcolor*



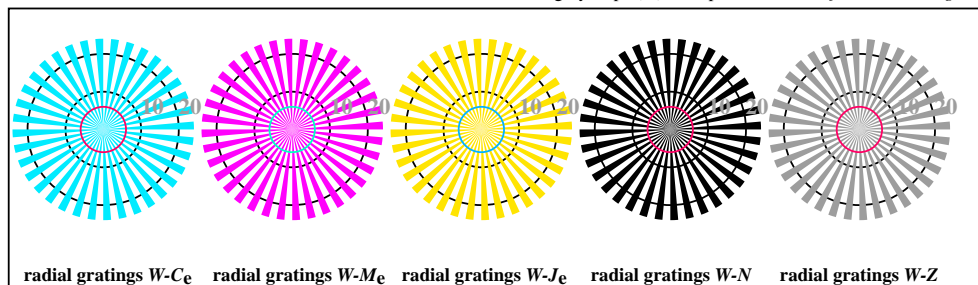
AE271-7, Picture B7Wde: Landolt-rings W-J_e; W-N; PS operator: *rgb->rgb_{de} setrgbcolor*

input: *rgb/cmy0/000n/w set...*
output: *->rgb_{de} setrgbcolor*

see similar files: <http://standards.iso.org/iso/9241/306/ed-2/AE27/AE27.HTM>
technical information: <http://www.ps.bam.de/9241E> or <http://farbe.it.tu-berlin.de/AE.HTM>



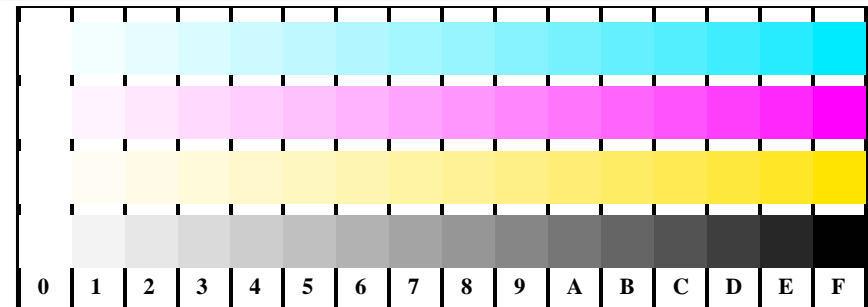
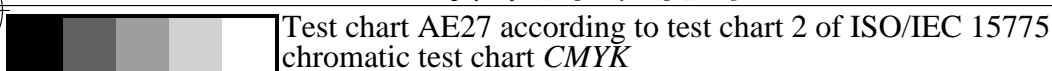
AE270-3, Picture B1Wde: Flower motif, 14 CIE-test colours and 2 + 16 grey steps (nf); PS operator: *settransfer*, 3 *colorimage*



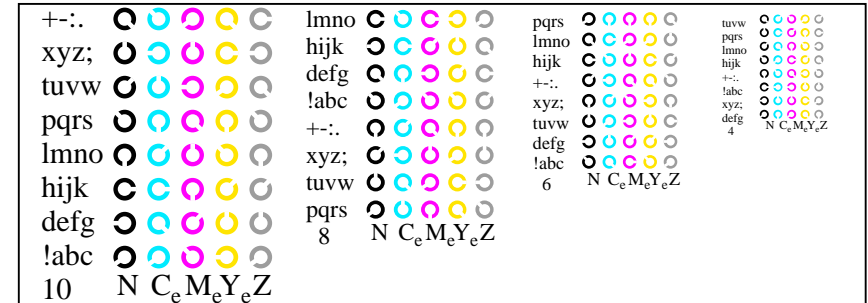
AE270-5, Picture B2Wde: radial gratings W-Ce; W-Me; W-Je; W-N; PS operator: *rgb->rgb_{de} setrgbcolor*



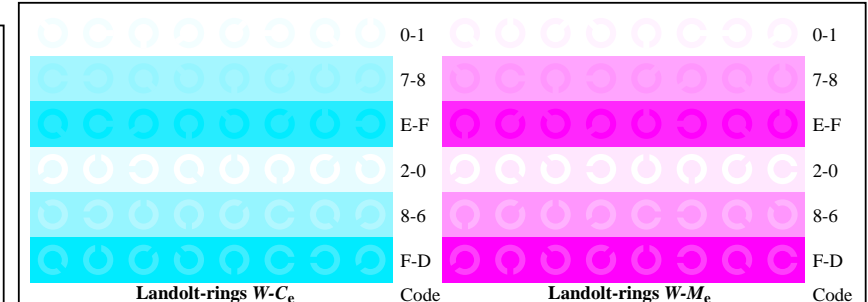
AE270-7, Picture B3Wde: 14 CIE-test colours and 2 + 16 grey steps (sf); *rgb/cmy0->rgb_{de} setrgbcolor*



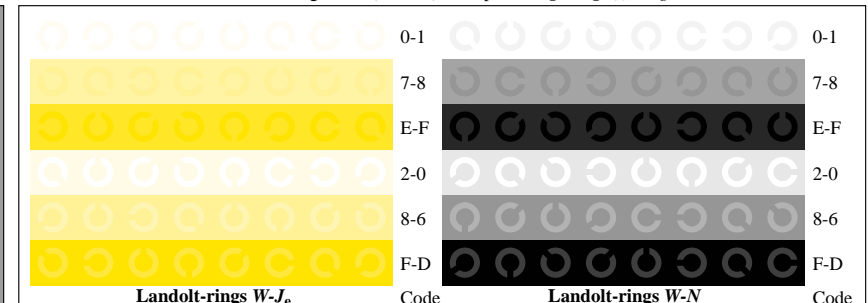
AE271-1, Picture B4Wde: 16 equidistant steps W-Ce; W-Me; W-Je; W-N; *rgb/cmy0->rgb_{de} setrgbcolor*



AE271-3, Picture B5Wde: Sript and Landolt-rings N; C_e; M_e; Y_e; Z; PS operator: *rgb->rgb_{de} setrgbcolor*



AE271-5, Picture B6Wde: Landolt-rings W-Ce; W-Me; PS operator: *rgb->rgb_{de} setrgbcolor*



AE271-7, Picture B7Wde: Landolt-rings W-Je; W-N; PS operator: *rgb->rgb_{de} setrgbcolor*

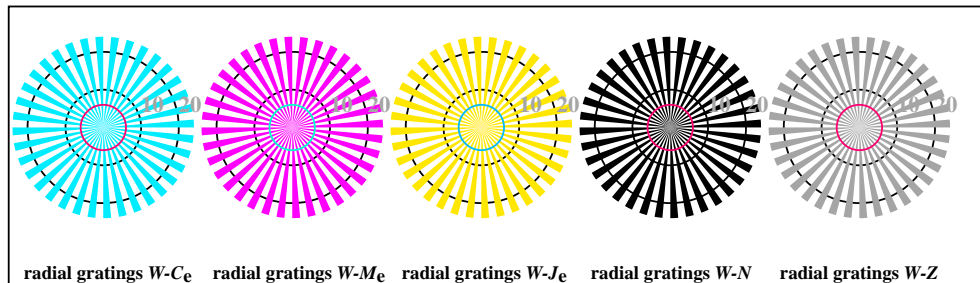
input: *rgb/cmy0/000n/w set...*
output: *->rgb_{de} setrgbcolor*

TUB Registration: 20170522-AE27/AE27L0FA.TXT /.PS
application for measurement or viewing of display output

TUB material: code=th4ta



AE270-3, Picture B1Wde: Flower motif, 14 CIE-test colours and 2 + 16 grey steps (nf); PS operator: *settransfer*, 3 *colorimage*

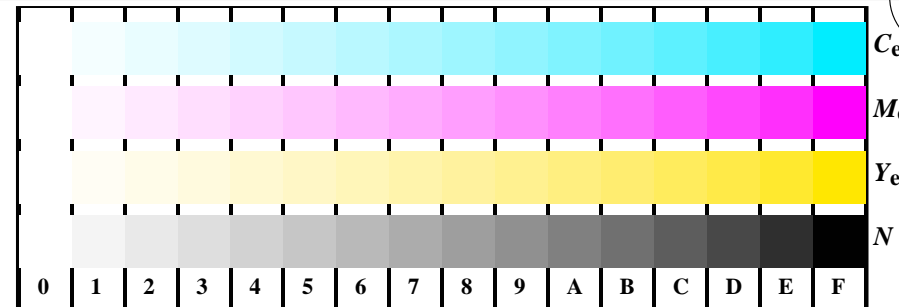


AE270-5, Picture B2Wde: radial gratings W-C_e; W-M_e; W-J_e; W-N; PS operator: *rgb->rgb_{de} setrgbcolor*

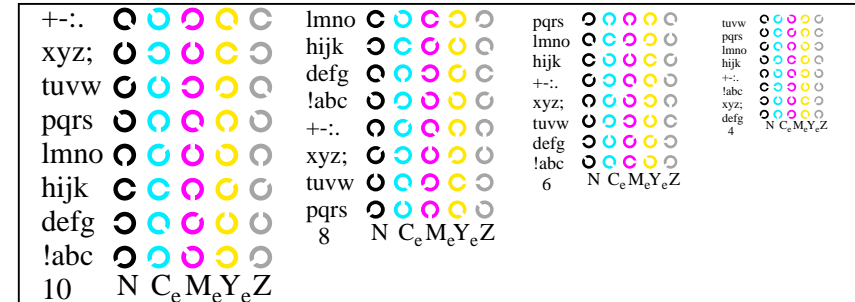


AE270-7, Picture B3Wde: 14 CIE-test colours and 2 + 16 grey steps (sf); *rgb/cmy0->rgb_{de} setrgbcolor*

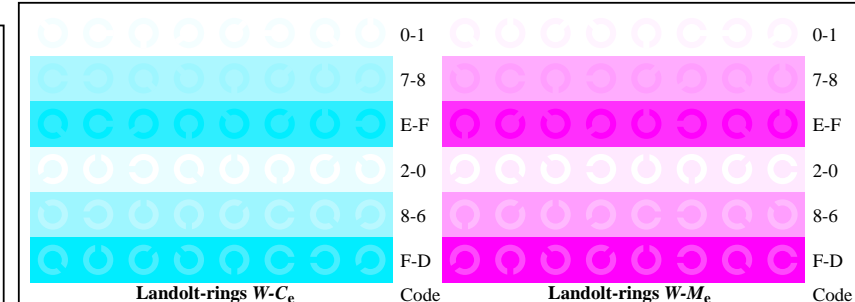
Test chart AE27 according to test chart 2 of ISO/IEC 15775
chromatic test chart CMYK



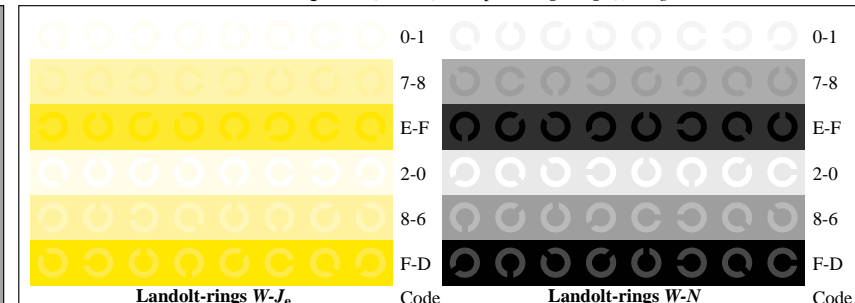
AE271-1, Picture B4Wde: 16 equidistant steps W-C_e; W-M_e; W-J_e; W-N; *rgb/cmy0->rgb_{de} setrgbcolor*



AE271-3, Picture B5Wde: Sript and Landolt-rings N; C_e; M_e; Y_e; Z; PS operator: *rgb->rgb_{de} setrgbcolor*



AE271-5, Picture B6Wde: Landolt-rings W-C_e; W-M_e; PS operator: *rgb->rgb_{de} setrgbcolor*

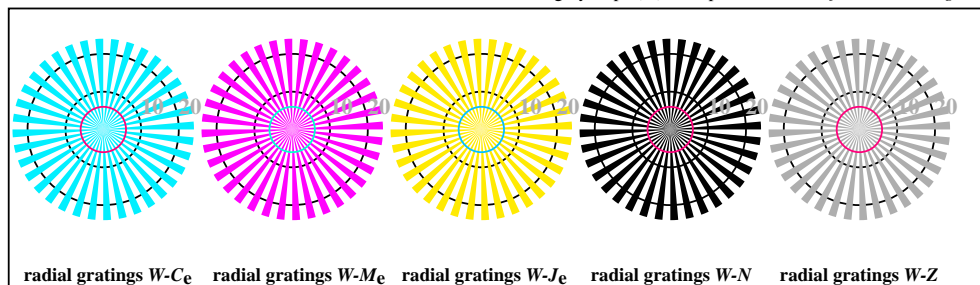


AE271-7, Picture B7Wde: Landolt-rings W-J_e; W-N; PS operator: *rgb->rgb_{de} setrgbcolor*

input: *rgb/cmy0/000n/w set...*
output: *->rgb_{de} setrgbcolor*



AE270-3, Picture B1Wde: Flower motif, 14 CIE-test colours and 2 + 16 grey steps (nf); PS operator: *settransfer*, 3 *colorimage*

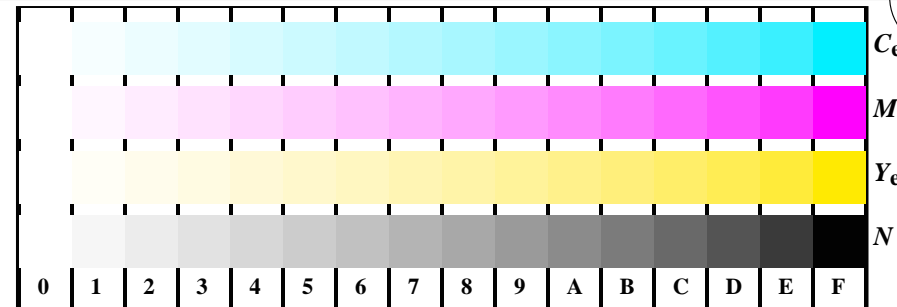


AE270-5, Picture B2Wde: radial gratings W-C_e; W-M_e; W-J_e; W-N; PS operator: *rgb->rgb_{de} setrgbcolor*

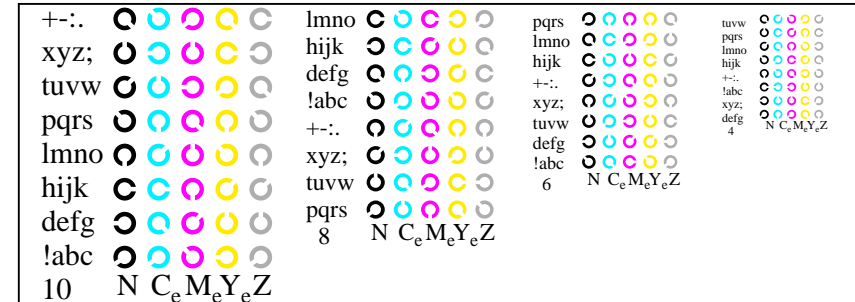


AE270-7, Picture B3Wde: 14 CIE-test colours and 2 + 16 grey steps (sf); *rgb/cmy0->rgb_{de} setrgbcolor*

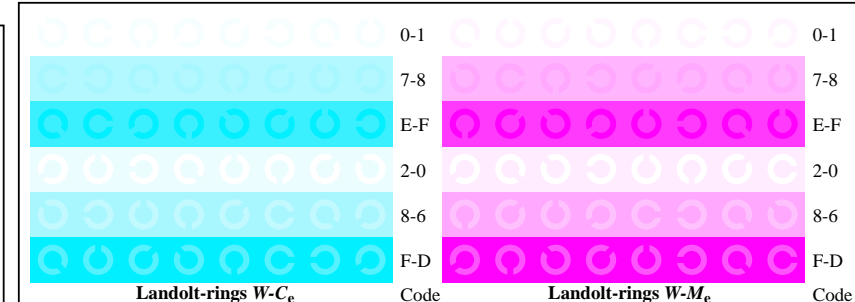
Test chart AE27 according to test chart 2 of ISO/IEC 15775
chromatic test chart CMYK



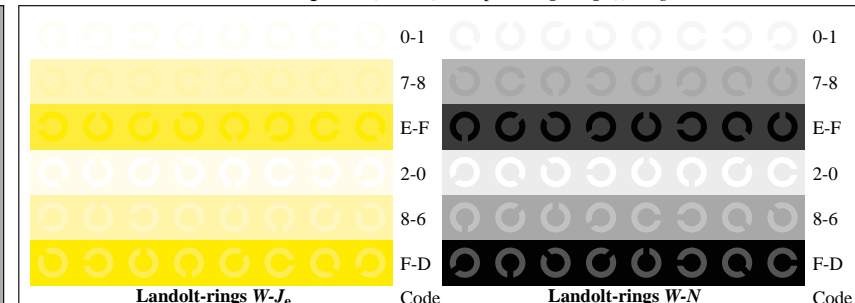
AE271-1, Picture B4Wde: 16 equidistant steps W-C_e; W-M_e; W-J_e; W-N; *rgb/cmy0->rgb_{de} setrgbcolor*



AE271-3, Picture B5Wde: Sript and Landolt-rings N; C_e; M_e; Y_e; Z; PS operator: *rgb->rgb_{de} setrgbcolor*



AE271-5, Picture B6Wde: Landolt-rings W-C_e; W-M_e; PS operator: *rgb->rgb_{de} setrgbcolor*

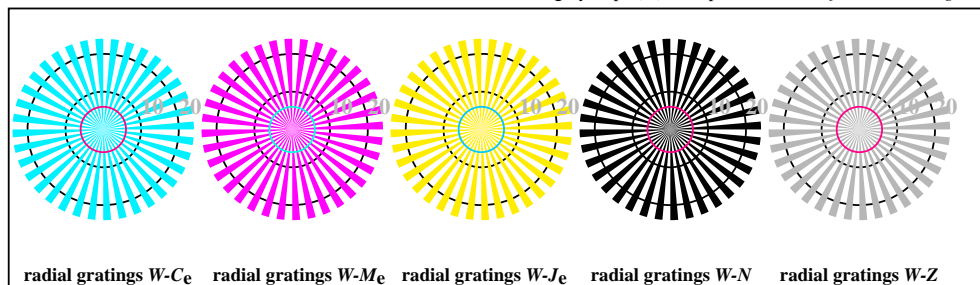


AE271-7, Picture B7Wde: Landolt-rings W-J_e; W-N; PS operator: *rgb->rgb_{de} setrgbcolor*

input: *rgb/cmy0/000n/w set...*
output: *->rgb_{de} setrgbcolor*



AE270-3, Picture B1Wde: Flower motif, 14 CIE-test colours and 2 + 16 grey steps (nf); PS operator: *settransfer*, 3 *colorimage*

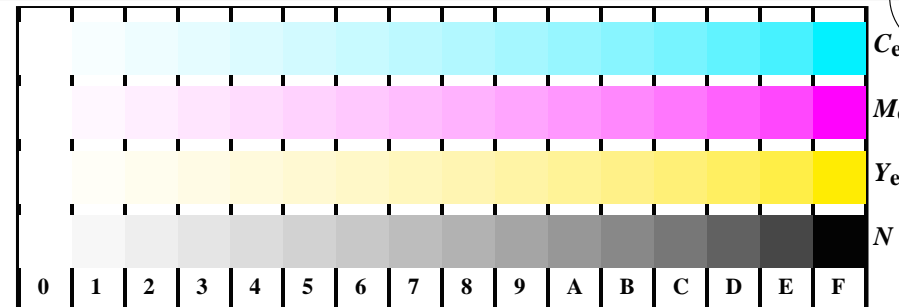


AE270-5, Picture B2Wde: radial gratings W-C_e; W-M_e; W-J_e; W-N; PS operator: *rgb->rgb_{de} setrgbcolor*

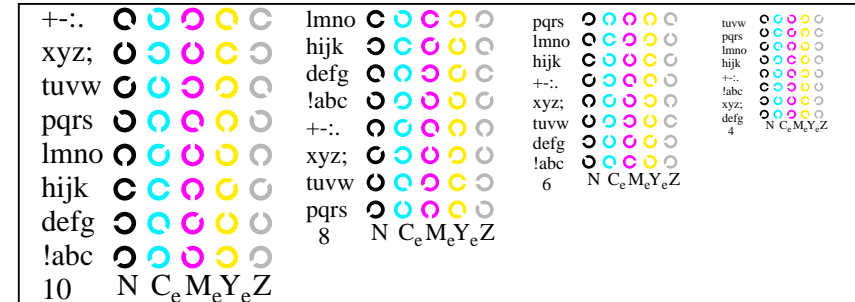


AE270-7, Picture B3Wde: 14 CIE-test colours and 2 + 16 grey steps (sf); *rgb/cmy0->rgb_{de} setrgbcolor*

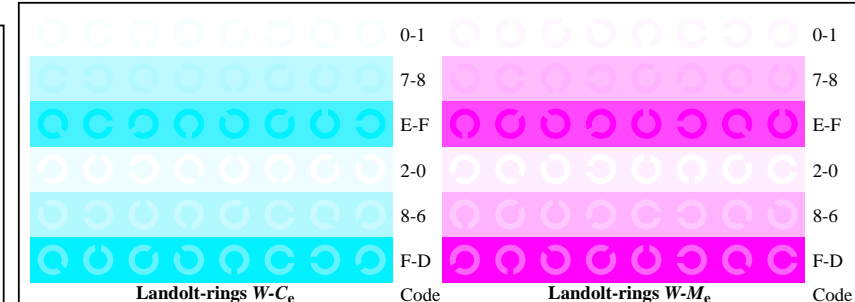
Test chart AE27 according to test chart 2 of ISO/IEC 15775
chromatic test chart CMYK



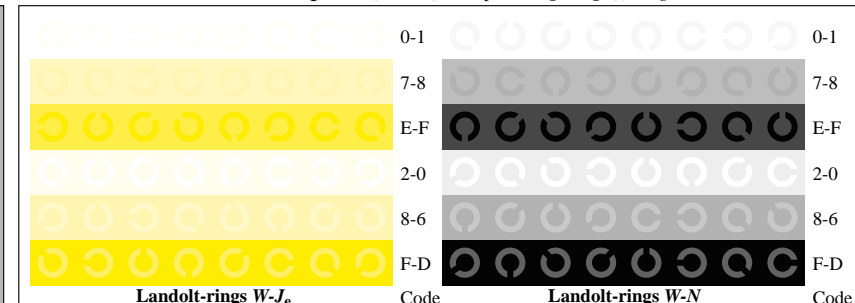
AE271-1, Picture B4Wde: 16 equidistant steps W-C_e; W-M_e; W-J_e; W-N; *rgb/cmy0->rgb_{de} setrgbcolor*



AE271-3, Picture B5Wde: Sript and Landolt-rings N; C_e; M_e; Y_e; Z; PS operator: *rgb->rgb_{de} setrgbcolor*



AE271-5, Picture B6Wde: Landolt-rings W-C_e; W-M_e; PS operator: *rgb->rgb_{de} setrgbcolor*



AE271-7, Picture B7Wde: Landolt-rings W-J_e; W-N; PS operator: *rgb->rgb_{de} setrgbcolor*

input: *rgb/cmy0/000n/w set...*
output: *->rgb_{de} setrgbcolor*