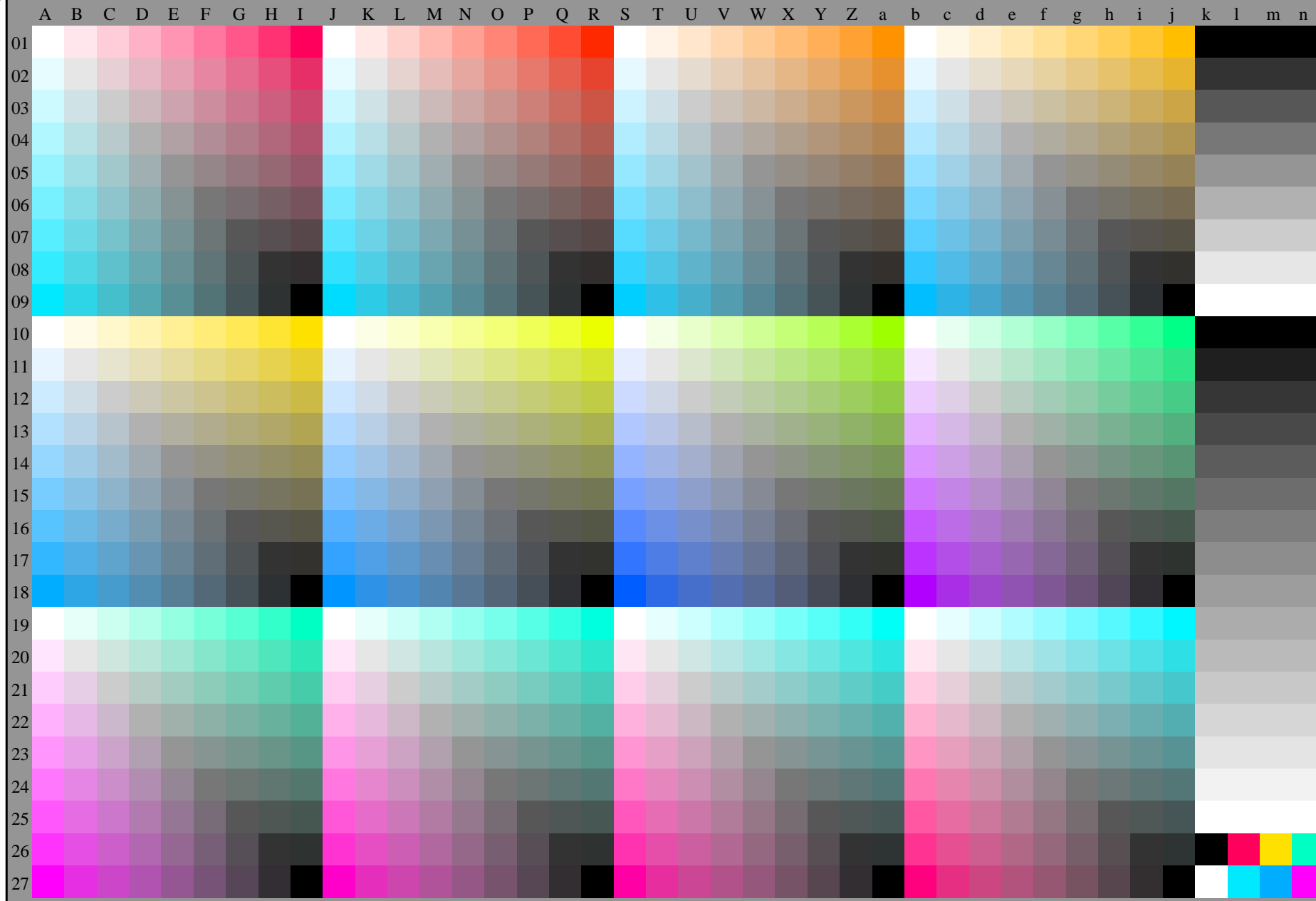


see similar files: <http://standards.iso.org/iso/9241/306/ed-2/AE56/AE56.HTM>  
technical information: <http://www.ps.bam.de/9241E> or <http://farbe.itu-berlin.de/AE.HTM>



TUB Registration: 20172201-AE56/AE56L0FA.TXT /.PS  
application for measurement or viewing of display output

TUB material: code=th4ta

AE560-70 Test chart AE56 with 1080 colours; 9 or 16 step colour scales; data in column (A-n): **rgb** + **cmY0** (A-j + k26-n27), **000n** (k), **w** (l), **nnn0** (m), **www** (n)

1-110000-L0 cmYn6\*

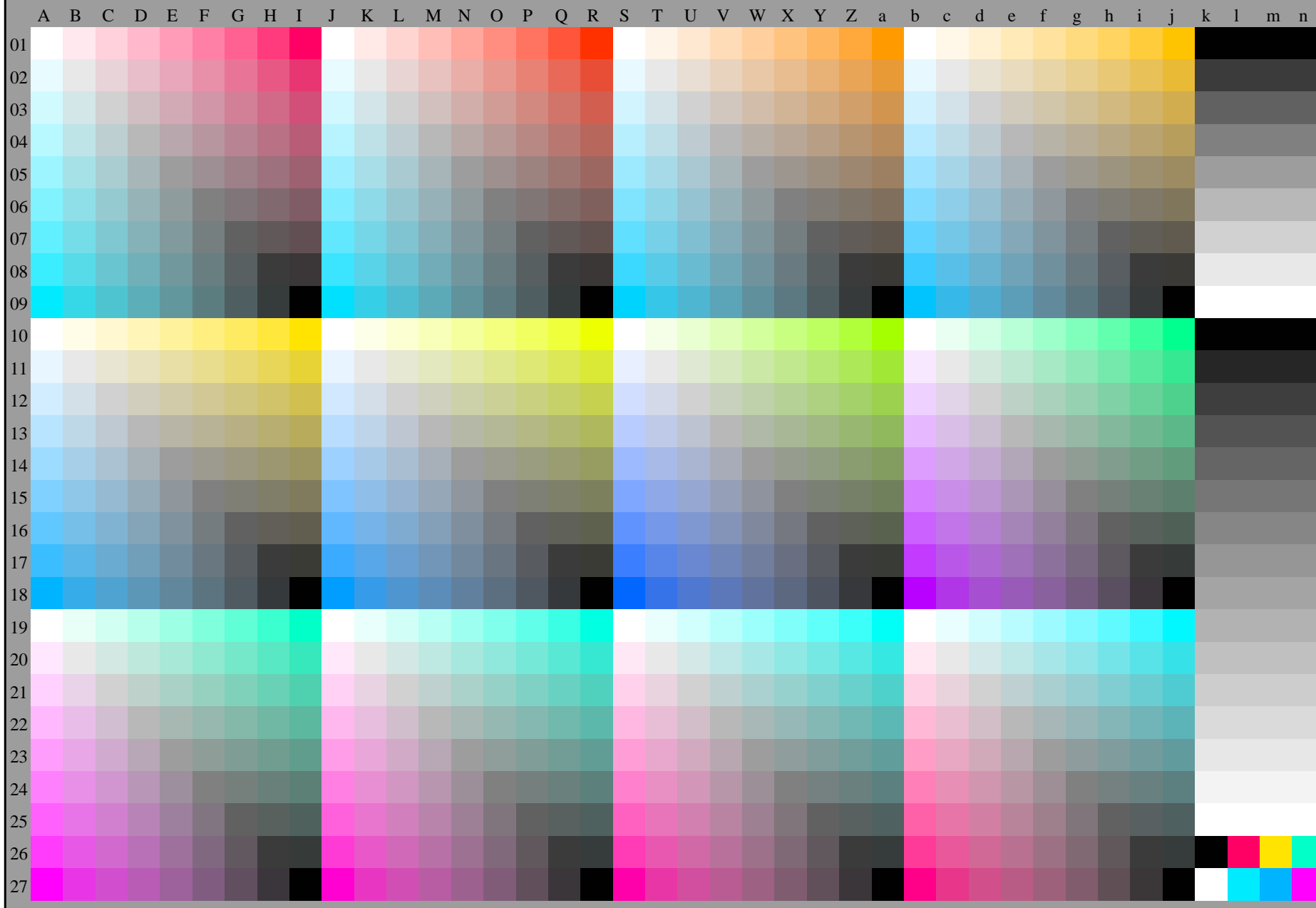
Test chart AE56 similar to test chart 1 of DIN 33872-6  
9x9 scales; 12 hue planes; 16 visual equidistant  $L^*$ -grey steps

input: **rgb/cmy0/000n/w** set...  
output: ->**rgb<sub>de</sub> setrgbcolor**

see similar files: <http://standards.iso.org/iso/9241/306/ed-2/AE56/AE56.HTM>  
technical information: <http://www.ps.bam.de/9241E> or <http://farbe.li.tu-berlin.de/AE.HTM>

TUB Registration: 20172201-AE56/AE56L0FA.TXT /.PS  
application for measurement or viewing of display output

TUB material: code=th4ta



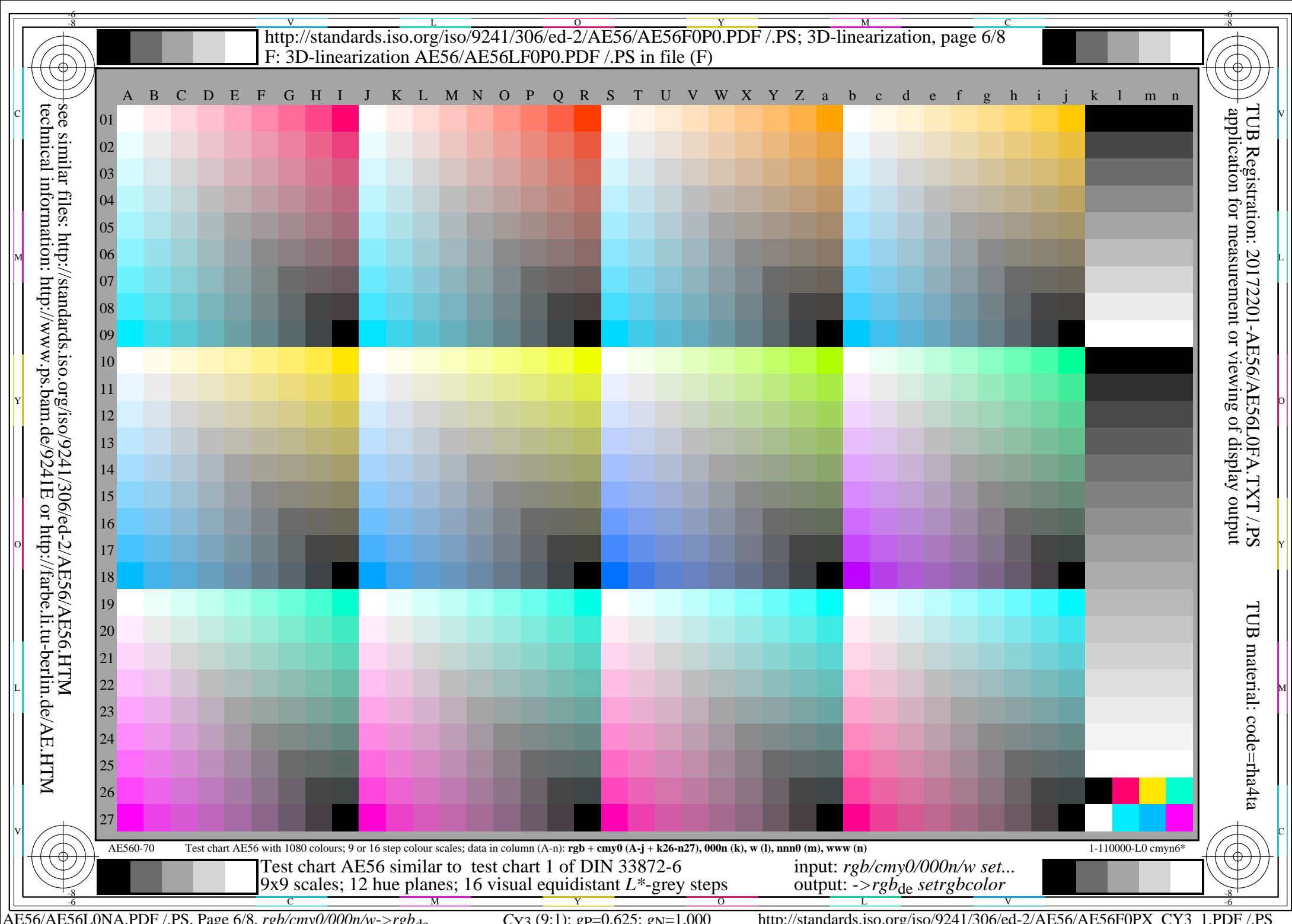
AE560-70

Test chart AE56 with 1080 colours; 9 or 16 step colour scales; data in column (A-n): **rgb + cmy0 (A-j + k26-n27), 000n (k), w (l), nnn0 (m), www (n)**

1-110000-L0 cmyn6\*

Test chart AE56 similar to test chart 1 of DIN 33872-6  
9x9 scales; 12 hue planes; 16 visual equidistant  $L^*$ -grey steps

input: *rgb/cmy0/000n/w set...*  
output: *->rgb<sub>de</sub> setrgbcolor*



<http://standards.iso.org/iso/9241/306/ed-2/AE56/AE56F0P0.PDF> /.PS; 3D-linearization, page 6/8  
F: 3D-linearization AE56/AE56LF0P0.PDF /.PS in file (F)

see similar files: <http://standards.iso.org/iso/9241/306/ed-2/AE56/AE56.HTM>  
technical information: <http://www.ps.bam.de/9241E> or <http://farbe.li.tu-berlin.de/AE.HTM>

TUB Registration: 20172201-AE56/AE56L0FA.TXT /.PS  
application for measurement or viewing of display output  
TUB material: code=th4ta

AE56-70 Test chart AE56 with 1080 colours; 9 or 16 step colour scales; data in column (A-n): **rgb + cmy0** (A-j + k26-n27), **000n** (k), **w** (l), **nnn0** (m), **www** (n)

1-110000-L0 cmyn6\*

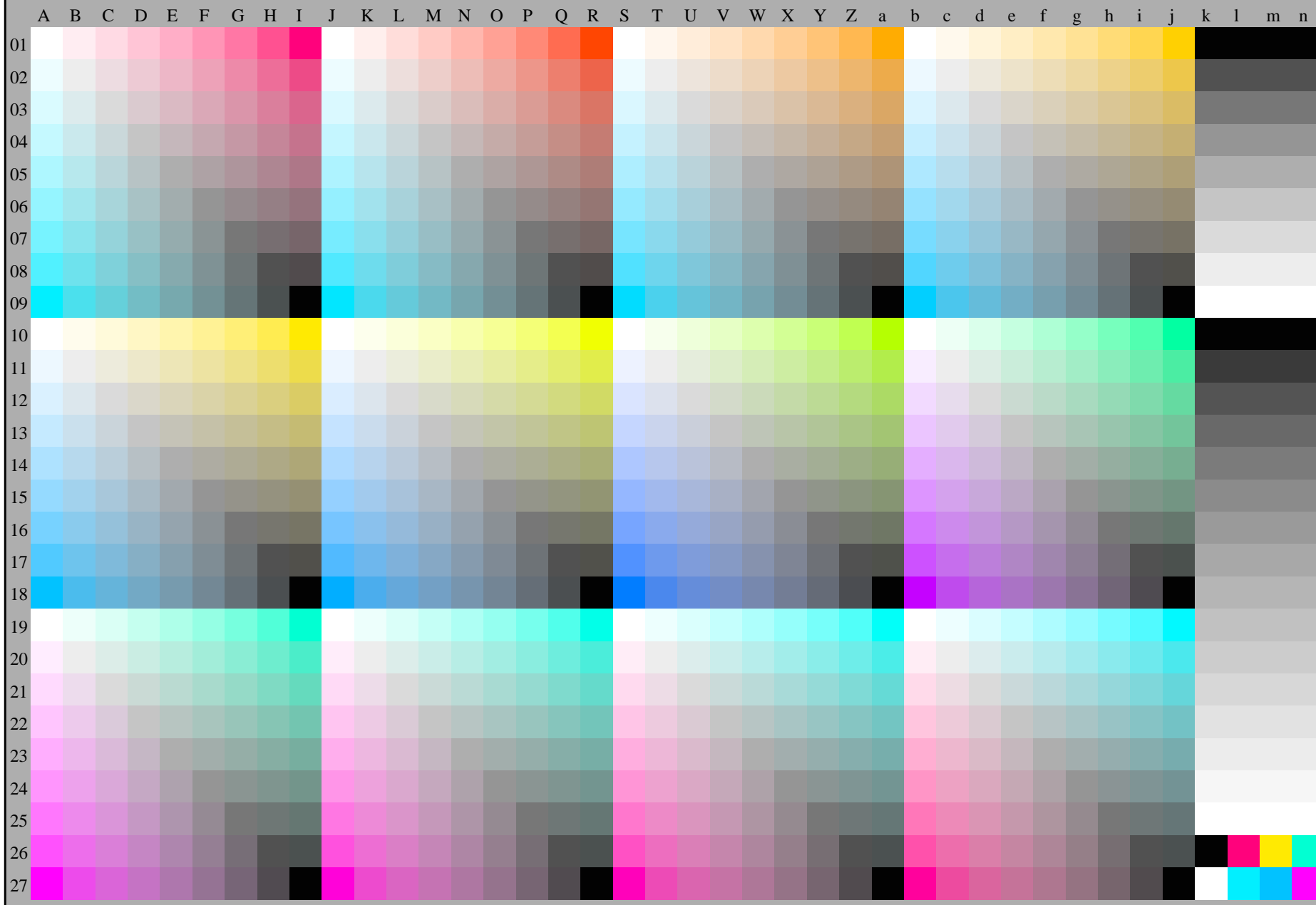
Test chart AE56 similar to test chart 1 of DIN 33872-6  
9x9 scales; 12 hue planes; 16 visual equidistant  $L^*$ -grey steps

input: **rgb/cmy0/000n/w set...**  
output: **->rgb<sub>de</sub> setrgbcolor**

see similar files: <http://standards.iso.org/iso/9241/306/ed-2/AE56/AE56.HTM>  
technical information: <http://www.ps.bam.de/9241E> or <http://farbe.li.tu-berlin.de/AE.HTM>

TUB Registration: 20172201-AE56/AE56L0FA.TXT /.PS  
application for measurement or viewing of display output

TUB material: code=th4ta



AE560-70

Test chart AE56 with 1080 colours; 9 or 16 step colour scales; data in column (A-n): **rgb + cmy0 (A-j + k26-n27), 000n (k), w (l), nnn0 (m), www (n)**

1-110000-L0 cmyn6\*

Test chart AE56 similar to test chart 1 of DIN 33872-6  
9x9 scales; 12 hue planes; 16 visual equidistant  $L^*$ -grey steps

input: *rgb/cmy0/000n/w set...*  
output: *->rgb<sub>de</sub> setrgbcolor*

